

Development proposals at Liddell Road - West Hampstead

This document illustrates the proposals for the public Play Space which forms part of the open area within the wider development at Liddell Road, West Hampstead. Planning consent was granted in 2015 under planning reference number 2014/7651/P. A Play Space was included within the consented scheme to the north-west corner of the site, close to the new proposed access to Maygrove Peace Park.

Please visit liddellroadconstruction.co.uk for further details.

The plan at the following page is extracted from the consented drawings and it shows, highlighted in pink, the location of the proposed Play Space.

The Play Space was not fully designed in 2015, its details were reserved by a planning condition. The development team welcome comments from the local residents and community groups on the current design proposals for the Play Space.

The Liddell Road development is currently under construction with completion anticipated for early 2024.



- KEY**
- Existing tree
 - Proposed tree
 - Porous Tarmac
 - Existing vegetation
 - Proposed planting
 - Grass mown/ wildflower meadows
 - Bonded rubber mulch softplay surface
 - Wetpour softplay surface
 - Permeable resin-bond surface
 - Linear concrete slabs
 - Linear concrete slabs
 - Loose gravel
 - Concrete patio paving

N

JCLA
 3A Iliffe Yard
 LONDON SE17 3QA
 Telephone
 444 (0)207 703 3270
 www.jcla.co.uk

Notes

- Do not scale from drawings.
- To be read in conjunction with all relevant Architects', Services and Structural Engineers' drawings.
- All existing site, tree and building information has been compiled from different sources.
- All dimensions to be checked on site.

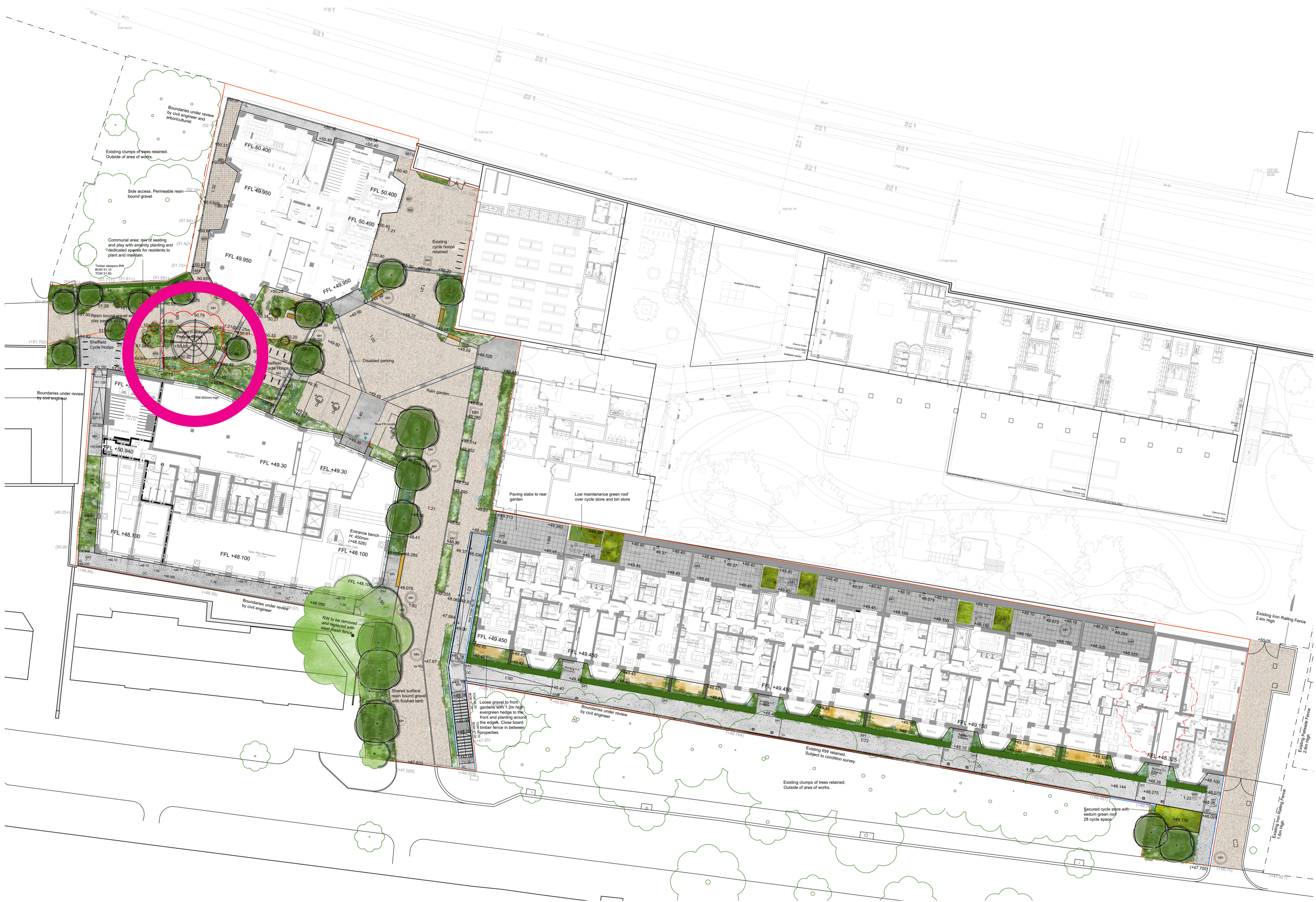
Revisions

Project	Kingsgate Liddell	Revision	
Project No.	KL037		
Client	London Borough of Camden		E
Date	2 December 2014		
Scale	1:250 @ A1		
Drawing Name.	Stage D: Landscape plan		
Dwg No.	KL037.D.01.LP.RevE		

The Play Space will be a public space accessible 24/7 to all. The Play Space will include:

- Timber play weaving poles
- Tiger mulch play area
- Willow dome hut
- Wooden stepping stones
- Timber gazebo
- Habitat gabion walls

The following plans show the current proposals for the Play Space:



RW average
800mm ht

(51.71+) (51.61+)

(51.65+)

(51.73+) +50.83
CL:50.80

49.950

TIMBER PLAY WEAVING POLES

+51.44
1:10
51.28 +51.2 +51.04

CL:50.80

50.85+

MH 1:40

60cm
51.35+ 51.25

1:60
51.00

50.75
CL:50.77

MH

TIMBER GAZEBO

51.10+ 80cm
51.10+ 51.03+
CL:51.00

50.79
4032
1:21@37.25m
+50.69 +50.58 +50.51
+50.33

4032

1:21@37.25m
+50.69 +50.58 +50.51

WILLOW DOME HUT AND
TIGER MULCH PLAY AREA

51.20
51.160
51.06+ +50.46

50.92
50.85
50.88 +50.80
+50.72

ø5940
ø4350

60cm
50.49
50.42

50.28+ CL:
50.26

WOODEN STEPPING STONE

FFL
+51.170
500L Eurobin
1100L Eurobin
1100L Eurobin
1100L Eurobin

+50.12

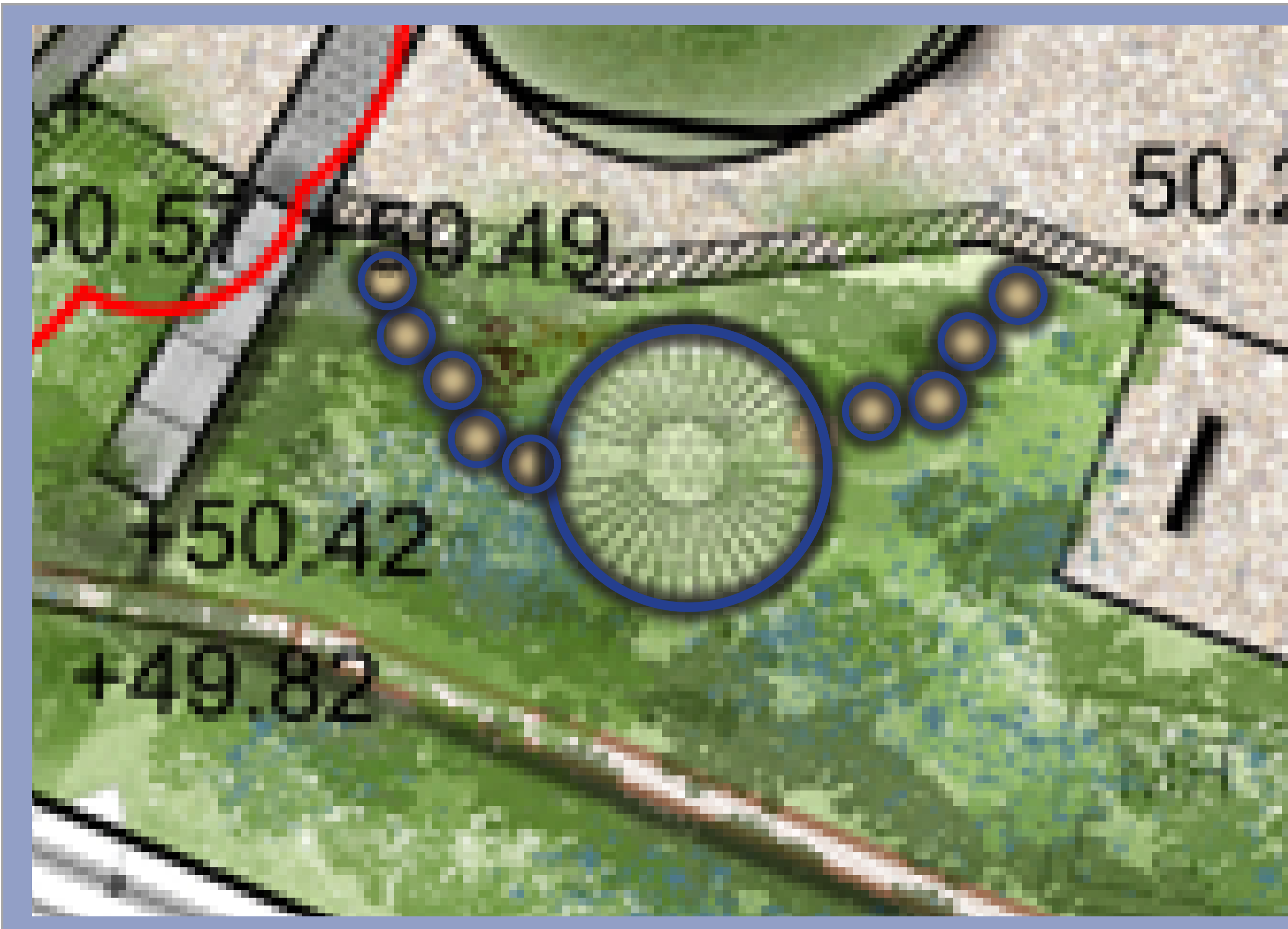
RW average
600mm high

50.57
50.49
50.42
+49.82
CL:50.10

MH

HABITAT GABION WALLS

+49
+49



WILLOW DOME HUT AND TIGER MULCH PLAY AREA WITH WOODEN STEPPING STONES



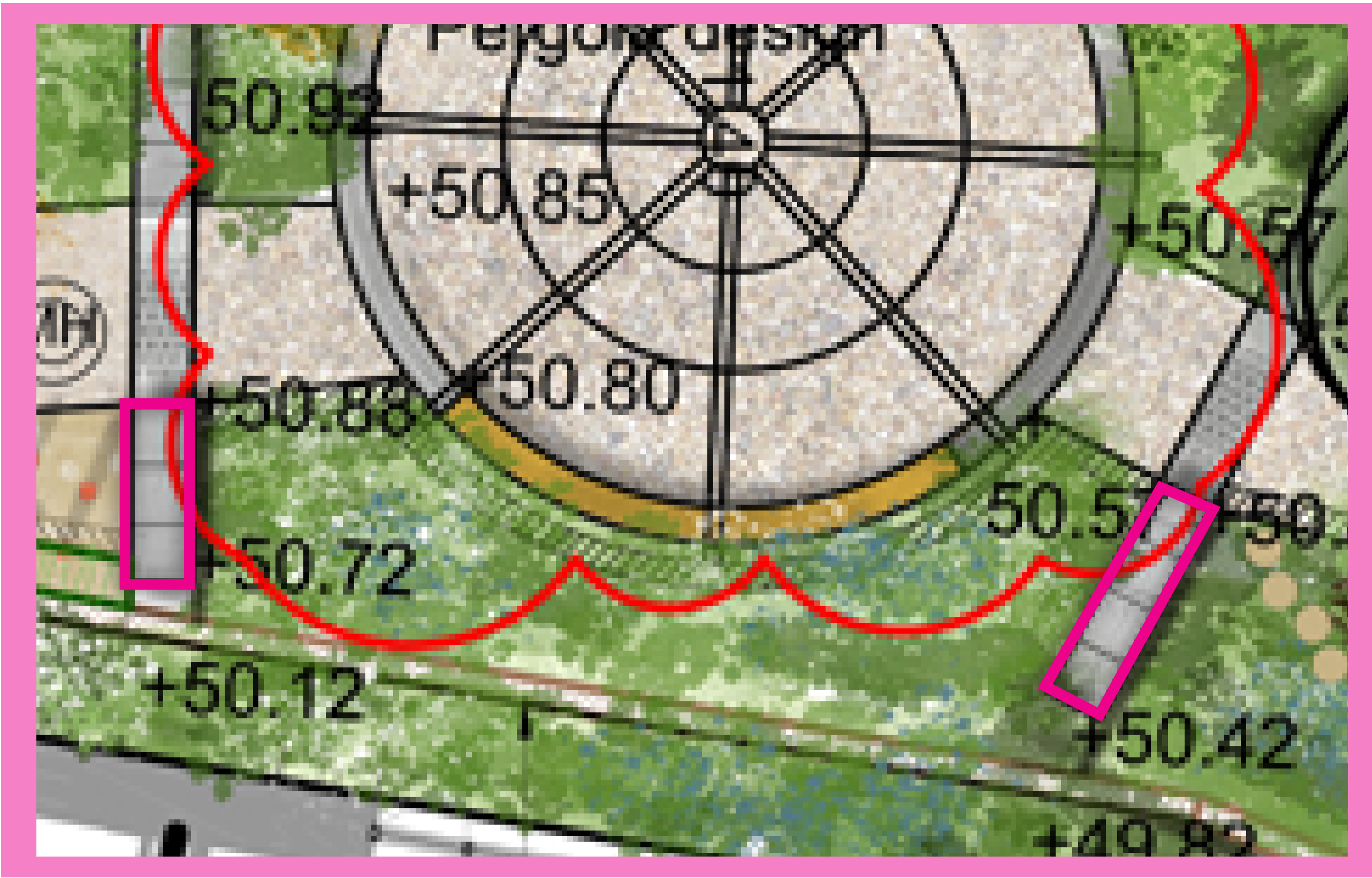
TIGER MULCH SURFACE UNDER LIVING WILLOW DOME



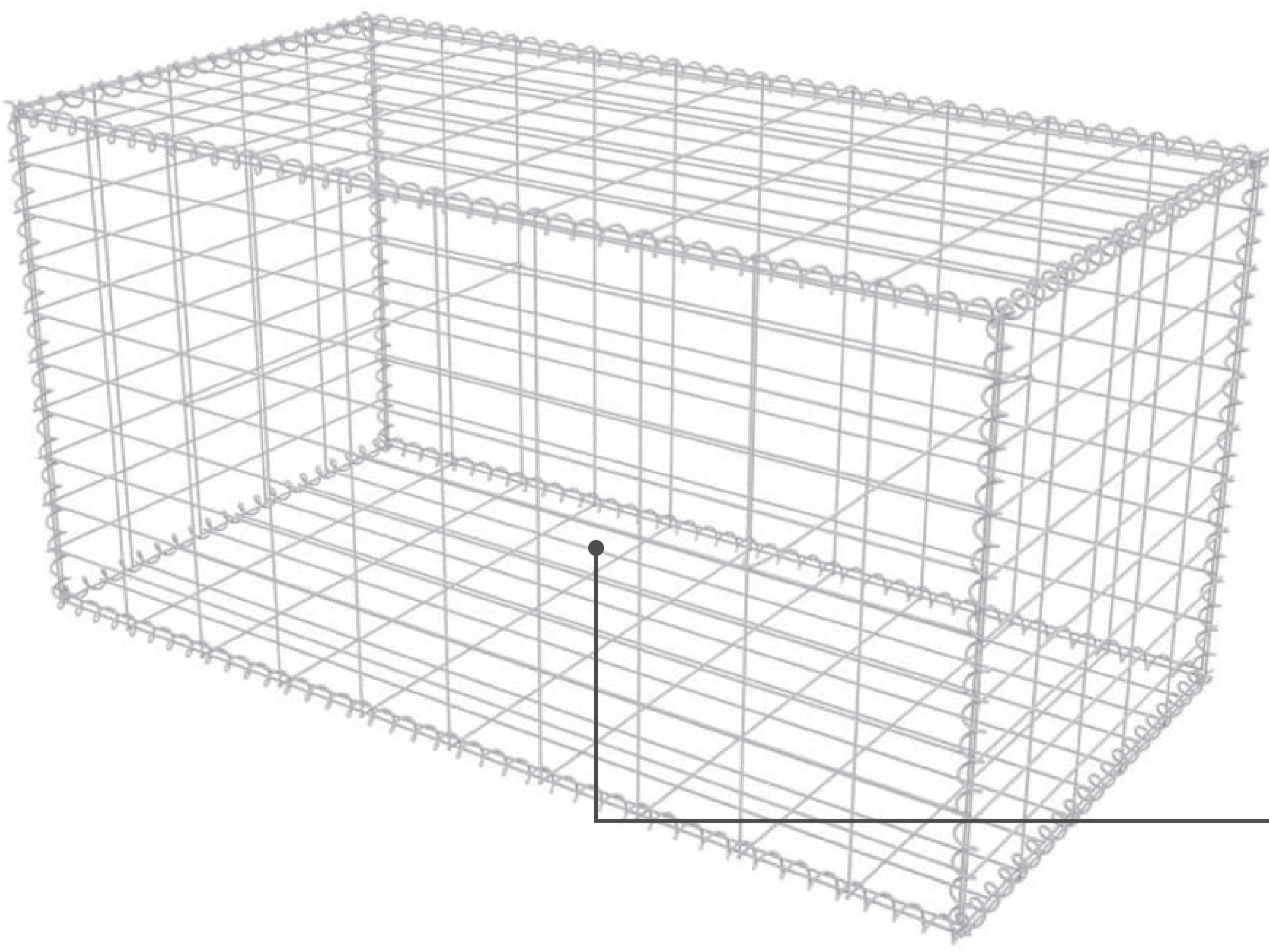
WOODEN LOG STEPPING STONES (MAX HEIGHT 50MM ABOVE GROUND) WITH SAFETY CROSS HATCHED TOP SURFACE



LIVING WILLOW DOME CIRCA 1.6M HIGH AND 2.0M DIAMETER WITH TIGER MULCH SURFACE UNDER

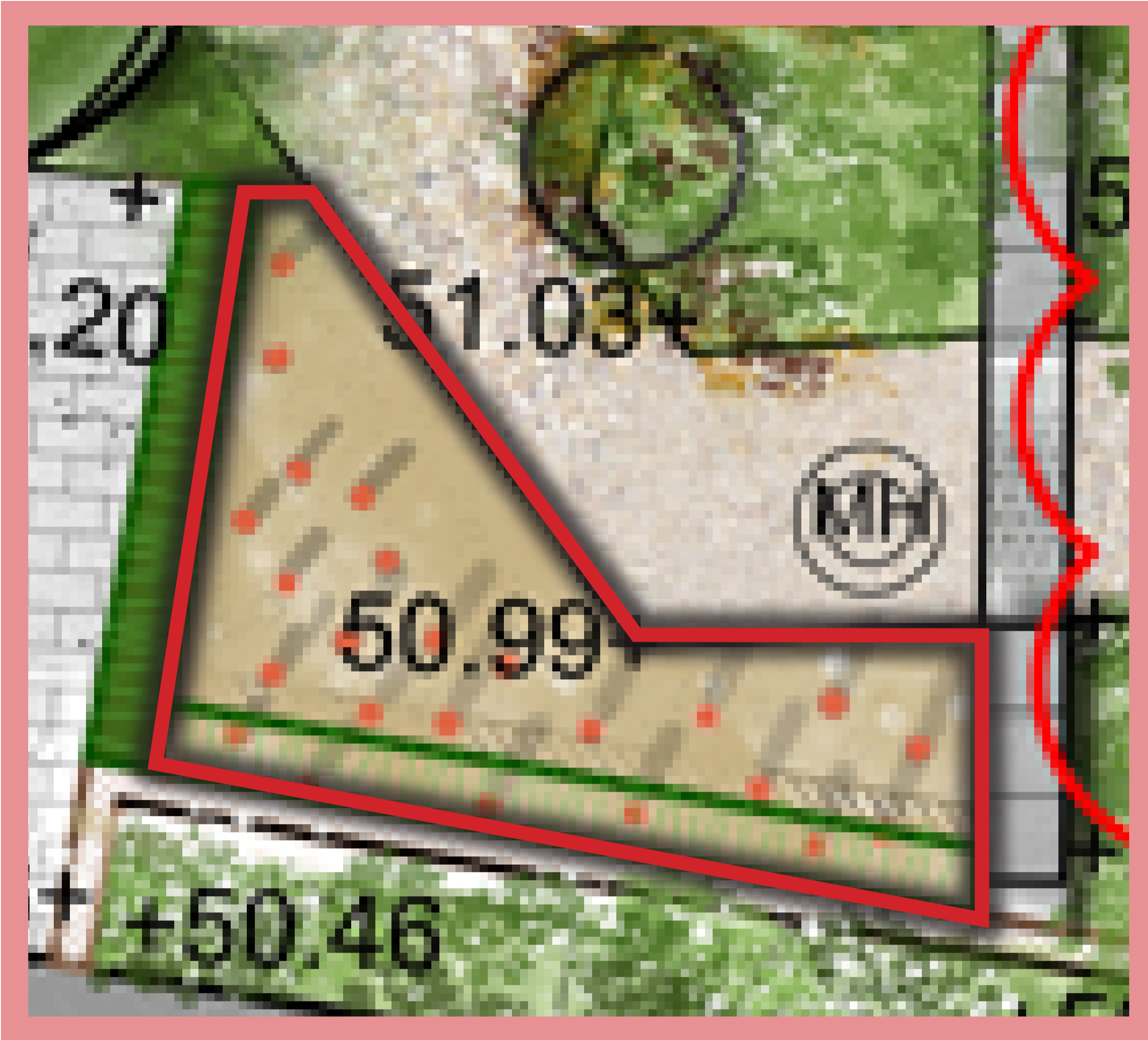


HABITAT GABION WALLS



GABION BASKETS 450X450MM FILLED WITH A MIX OF MATERIALS SUCH AS BOULDERS, BRICKS, TIMBER AND PLANTING TO CREATE HABITAT WALLS FOR WILDLIFE

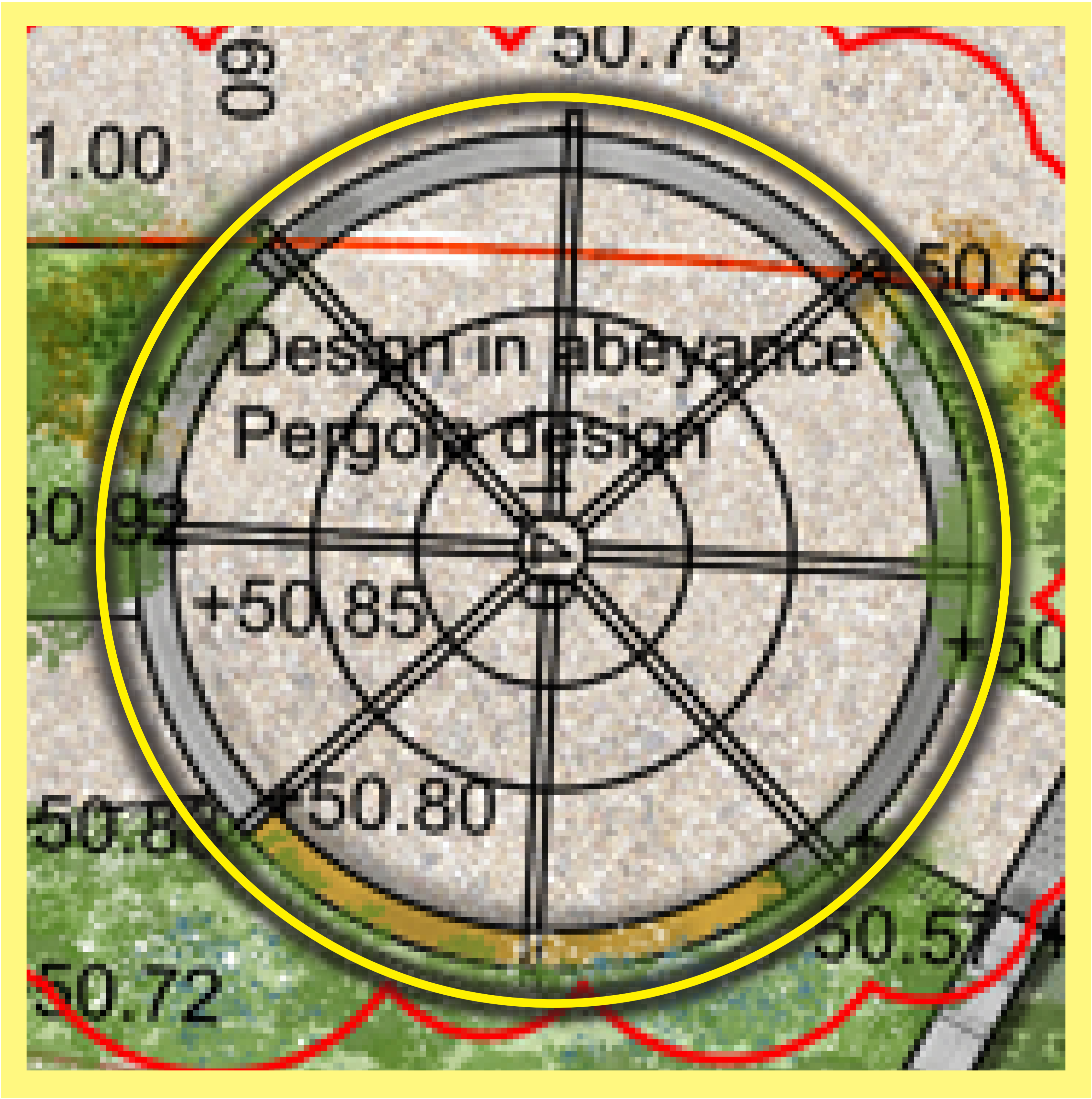
TIMBER PLAY READY GRADE POLES, 150MM DIAMETER, FREE OF SHAKES AND SPLITS SUITABLE FOR PLAY AREA. 1.5M HEIGHT ABOVE GROUND LEVEL AND STRUCTURALLY SECURED INTO THE GROUND



TIMBER PLAY WEAVING POLES



TIGER MULCH SURFACE TO WEAVING POLES AREA



COVERED GAZEBO - PLAN



GAZEBO - REFERENCE IMAGE

TIMBER FRAME STRUCTURE

We would like to invite all local residents, stakeholders and community groups to comment on the proposals for the Play Space illustrated within this document.

The advice and recommendations received will help us ensure the Play Space to be delivered as part of the Liddell Road development will suit the needs and aspirations of all the intended users and become a positive focus for communities and individuals alike.

Please visit liddellroadconstruction.co.uk and email us at feedback@liddellroadconstruction.co.uk

Thank you