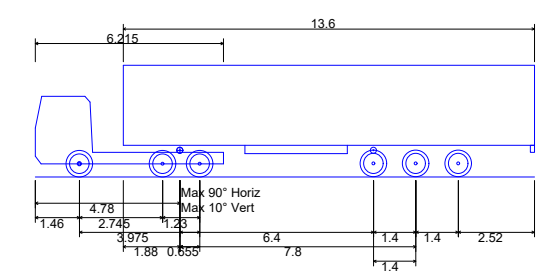
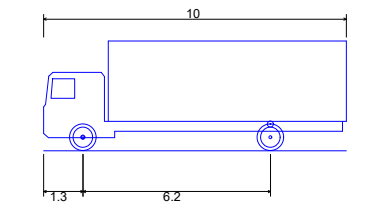


NOTES



Articulated Vehicle with Twin Steered Tractor
 Overall Length 16.500m
 Overall Width 2.550m
 Overall Body Height 3.691m
 Min Body Ground Clearance 0.426m
 Max Track Width 2.500m
 Lock to lock time 6.00s
 Kerb to Kerb Turning Radius 6.987m



FTA Design Rigid Vehicle (1983)
 Overall Length 10.000m
 Overall Width 2.500m
 Overall Body Height 3.632m
 Min Body Ground Clearance 0.427m
 Track Width 2.500m
 Lock to lock time 4.00s
 Kerb to Kerb Turning Radius 12.000m

Reproduced from Ordnance Survey digital data with the permission of the Controller of Her Majesty's Stationery Office, Crown copyright (License number 100061842).

Drawn by RH	Approved by DF	Date 25.10.21
Scale 1:500 @ A3	Drawing No SY-21-0012	
Drawing Title SY-0012-008		Rev -